

ChemWhat®

Featured Catalog of Biotech Products



| Product | Abbreviation | Order # | Application(s) |
|---|------------------------------|---------|--|
| 3 α -Hydroxysteroid Dehydrogenase | 3 α -HSD | CB1061 | Total bile acid (TBA) |
| Thionicotinamide-Adenine Dinucleotide | Thio-NAD | CB1083 | |
| D-Lactate Dehydrogenase | LDH | CB1071 | Alanine transaminase (ALT) Aspartate aminotransferase (AST) |
| Malate Dehydrogenase | MDH | CB1081 | |
| α -Ketoglutaric Acid | α -KG | CB1015 | |
| α -Ketoglutaric Acid Disodium Salt Dihydrate | α -KG-Na ₂ | CB2015 | |
| Bilirubin Oxidase | BOD | CB1052 | Enzymatic assay for TB/DB |
| L- γ -glutamyl-3-carboxy-4-nitroanilide | Glupa-C | CB1072 | γ -Glutamyl Transferase |
| Xanthine Oxidase | XOD | CB1034 | Adenosine deaminase (ADA) 5'-Nucleotidase (5'-NT) |
| Purine Nucleoside Phosphorylase | PNP | CB1044 | 5'-Nucleotidase (5'-NT) |
| 5'-Nucleotidase | 5'-NT | CB1056 | 5'-nucleotidase (5'-NT) calibration |
| α -L-fucosidase | AFU | CB2064 | α -L-fucosidase (AFU) |
| 2-Chloro-4-nitrophenyl α -L-fucopyranoside | CNP-AFU | CB1074 | |
| Creatinine Amidohydrolase | CNH | CB6010 | Creatinine – sarcosine oxidase (Crea-S) method |
| Creatine Amidinohydrolase | CRH | CB1020 | |
| Sarcosine Oxidase | SOX | CB1030 | |
| Uricase | UA | CB5090 | Uric acid (UA) |
| Fructosyl-peptide Oxidase | FPOX | CB1031 | Hemoglobin A1c (HbA1c) |
| Ketoamine Oxidase | KAOD | CB1041 | Glycated albumin (GA) |
| Proteinase K | PRK | CB0054 | Glycated albumin (GA) Hemoglobin A1c (HbA1c) |
| Proteinase K Solution | PRK Solution | CB2054 | |

| Product | Abbreviation | Order # | Application(s) |
|---|------------------------|---------|--|
| Pyranose Oxidase | PROD | CB1051 | 1,5-anhydro-D-glucitol (1,5-AG) |
| Pyruvate Kinase | PK | CB2093 | |
| D-3-Hydroxybutyrate Dehydrogenase | β -HBDH | CB1012 | β -Hydroxybutyrate (β -HB) |
| Diaphorase | DPH | CB1022 | |
| Glucose Oxidase | GOD | CB1062 | Glucose (GLU) |
| Glucose Dehydrogenase (FAD) | GDH (FAD) | CB1086 | Glucose testing (dry chemistry) |
| Glucose-6-phosphate Dehydrogenase | G6PDH | CB1060 | Creatine Kinase CK/CKMB |
| Hexokinase | HK | CB5070 | |
| Creatine Kinase-MM Isoenzyme (CK-MM) Antibody | CK-MM | CB1080 | |
| Creatine Phosphate | CP | CB1047 | |
| 1-myristoyl-2-(4-nitrophenylsuccinyl)- sn-glycero-3-phosphocholine | (Lp-PLA2 substrate) | CB1095 | Lipoprotein-associated phospholipase A2 (Lp-PLA2) |
| Cholesterol Esterase | CE | CB2040 | High/low-density lipoprotein- cholesterol (HDL-C/LDL-C) |
| Cholesterol Oxidase | COX | CB1050 | |
| Emulgen B66 (Surfactant) | B66 | CB1085 | |
| Lipoprotein Lipase | LPL | CB1001 | Triglyceride (TG) |
| L- α -Glycerophosphate Oxidase | G3PO | CB1011 | |
| Glycerol Kinase | GK | CB5021 | |
| Cystathionine- β -synthase | CBS | CB1004 | Homocysteine (Cystathionine) |
| Cystathionase β -lyase | CBL | CB1014 | |

| Product | Abbreviation | Order # | Application(s) |
|---|-------------------|---------|---|
| S-adenosylmethionine synthetase | MAT | CB1028 | Hydrolase assay |
| Homocysteine Methyltransferase | HMT | CB2028 | |
| S-adenosyl-L-homocysteine Hydrolase | SAHH | CB3028 | |
| Adenosine Deaminase | ADA | CB1046 | |
| Glutamic Dehydrogenase | GLDH | CB1037 | |
| Lactic Oxidase | LOX | CB1026 | Lactic Acid |
| Acyl-CoA Synthase | ACS | CB1032 | Nonesterified Fatty Acid |
| Acyl-CoA Oxidase | ACOD | CB1042 | |
| Sphingomyelinase | SPC | CB1066 | Small dense low-density lipoprotein-cholesterol (sdLDL-C) |
| Phosphoenolpyruvate Carboxykinase | PEPC | CB1091 | Carbon dioxide (CO ₂) |
| Carbon Anhydrase | CA II | CB1016 | CO ₂ (dry chemistry) |
| α-Glucosidase | α-GLU | CB2002 | α-Amylase (α-AMY) |
| Ethylidene-4-nitrophenyl-α-D-maltoheptaoside | EPS | CB1005 | |
| 2-Chloro-4-nitrophenyl-α-galactosyl-maltoside | Gal-G2-α-CNP | CB1008 | |
| 2-Chloro-4-nitrophenyl-α-maltotrioside | CNP-G3 | CB1018 | |
| Peroxide | POD | CB1082 | All-purpose |
| Catalase | CAT | CB1092 | |
| Ascorbate Oxidase | ASOD | CB1003 | |
| Nicotinamide-Adenine Dinucleotide | NAD ⁺ | CB1013 | |
| Dihyronicotinamide-adenine Dinucleotide | NADH | CB1023 | |
| Nicotinamide-Adenine Dinucleotide Phosphate | NADP ⁺ | CB1033 | |
| Dihyronicotinamide-adenine Dinucleotide Phosphate | NADPH | CB1043 | |
| Adenosine Triphosphate | ATP | CB1053 | |

| Product | Abbreviation | Order # | Application(s) |
|--|--------------|---------|--|
| Adenosine Diphosphate | ADP | CB1065 | All-purpose |
| Adenosine Monophosphate | AMP | CB1075 | |
| 10-(carboxymethyl-aminocarbonyl)-3,7-bis (dimethylamino) Phenothiazine Sodium Salt | DA-67 | CB1073 | Enzymatic colorimetric assay (chromogen: 660 nm) |
| N-(carboxymethyl-aminocarbonyl)-4,4'-bis (dimethylamino) diphenylamine Sodium Salt | DA-64 | CB1024 | Enzymatic colorimetric assay (chromogen: 700 nm) |
| Disodium 4-nitrophenyl Phosphate | PNPP | CB1027 | Phosphatase color development (as substrate) |

05

Recommendations

Spingomyelinase (SPC)

Supports reagent R&D with broad-range substrate specificity;
 Features high specific activity, reducing interference with a smaller input;
 Single-batch production capacity >100 g, with controlled batch-to-batch difference.

| | |
|---------------------|---|
| Appearance | White/brown amorphous freeze-dried powder |
| Enzyme Activity | ≥100 U/mg (powder) |
| Storage | -20°C |
| Optimal pH | 7.0 |
| pH Stability | 6.0-8.0 (37°C, 60 min) |
| Optimal Temperature | 37°C |
| Thermal Stability | Stable below 40°C (pH 7.5, 10 min) |
| Long-term Stability | Stable for at least 12 months if properly kept at -20°C |
| Molecular Weight | 41 kDa (SDS-PAGE) |
| PI | 8.6 |
| Application(s) | R&D and bulk production of sd-LDL-C assay reagents |

Recommendations

ChemWhat

Cystathionase- β -lyase (CBL)

Supplied as a freeze-dried powder form;
Featured high specific activity and stability, as well as improved long-term and in-use stability;
Simplify the process of reagent preparation by the accurate activity of CBL, reduced the difference batch to batch.

| | |
|---------------------|--|
| Appearance | Yellow amorphous freeze-dried powder |
| Enzyme Activity | ≥ 20 U/mg (powder) |
| Storage | -20°C |
| Optimal pH | 8.0 |
| pH Stability | 6.0-10.0 (25°C, 16 h) |
| Optimal Temperature | 50°C |
| Thermal Stability | 6.0-10.0 (25°C, 16 h) |
| Long-term Stability | Stable (activity >90%) for 12 months if properly kept at -20°C |
| Molecular Weight | 51 kDa (SDS-PAGE) |
| PI | 6.0 |
| Application(s) | R&D and bulk production of HCY assay reagents |

ChemWhat

Cystathionine- β -synthase (CBS)

Comes in a freeze-dried powdered form;
Features a modified molecular structure with higher stability and water solubility;
Simplify the process of reagent preparation by the accurate activity of CBS, reduced the difference batch to batch.

| | |
|---------------------|--|
| Appearance | Yellow amorphous freeze-dried powder |
| Enzyme Activity | ≥ 8 U/mg (powder) |
| Storage | -20°C |
| Optimal pH | 8.0 |
| pH Stability | 6.0-10.0 (25°C, 16 h) |
| Optimal Temperature | 40°C |
| Thermal Stability | Stable below 45°C (pH 8.0, 30 min) |
| Long-term Stability | Stable (activity >90%) for 12 months if properly kept at -20°C |
| Molecular Weight | 51 kDa (SDS-PAGE) |
| PI | 5.4 |
| Application(s) | R&D and bulk production of HCY assay reagents |

Recommendations

ChemWhat

Diaphorase (DPH)

Features high specific activity, reduces enzymes powder input;
Maintains high stability (>100 min at 75°C);
Guaranteed long-term stability up to 24 months;
Suitable for a range of electrochemical reactions as an electron carrier.

| | |
|---------------------|--|
| Appearance | Yellow amorphous freeze-dried powder |
| Enzyme Activity | ≥200 U/mg (powder) |
| Storage | -20°C |
| Optimal pH | 7.5 |
| pH Stability | 4.5-9.0 (25°C, 16 h) |
| Optimal Temperature | 45°C |
| Thermal Stability | Stable below 50°C (pH 7.5, 30 min) |
| Long-term Stability | Stable (activity >90%) for 12 months if properly kept at -20°C |
| Molecular Weight | 28 kDa (SDS-PAGE) |
| PI | 5.2 |
| Application(s) | R&D and bulk production of β-HB assay reagents |

07

ChemWhat

D-3-Hydroxybutyrate Dehydrogenase (β-HBDH)

Displays high specific activity;
Features a modified molecular structure with 10-fold higher stability.

| | |
|---------------------|--|
| Appearance | White amorphous freeze-dried powder |
| Enzyme Activity | ≥300 U/mg (powder) |
| Storage | -20°C |
| Optimal pH | 8.5 |
| pH Stability | 5.0-10.0 (25°C, 16 h) |
| Optimal Temperature | 60°C |
| Thermal Stability | Stable below 50°C (pH 8.5, 30 min) |
| Long-term Stability | Stable (activity >80%) for 12 months if properly kept at -20°C |
| Molecular Weight | 27 kDa (SDS-PAGE) |
| PI | 6.1 |
| Application(s) | R&D and bulk production of β-HB assay reagents |

| Product | Abbreviation | Order # | Application(s) |
|--|--------------|---------|--|
| APS-5 Powder | HHCS-1 | CB1063 | Alkaline phosphatase detection systems |
| APS-5 Solution | HHCS-4 | CB4063 | |
| AMPPD Powder | AMPPD | CB2067 | |
| AMPPD Solution | AMPPD | CB1067 | |
| CDP-Star Powder | CDP-Star | CB9067 | |
| Alkaline Phosphatase | ALP | CB1076 | |
| 4-(Imidazol-1-yl) phenol | 4-IM-PH | CB1075 | Luminol-enhanced for CLIA |
| Acridinium Ester NSP-DMAE-NHS Powder | AE | CB1084 | Acridinium ester for CLIA |
| Acridinium Ester NSP-SA-NHS Powder | SA-AE | CB2084 | |
| Acridinium Ester NSP-DMAE-NHS Solution | AE | CB1184 | |
| Acridinium Ester NSP-SA-NHS Solution | SA-AE | CB2184 | |
| Acridinium Ester NSP-DMAE-HEG-NHS Powder | DMAE-HEG | CB1035 | |
| Acridinium Ester NSP-DMAE-Z-NHS Powder | DMAE-Z | CB1045 | |
| Acridinium Ester NSP-DMAE-Y-NHS Powder | DMAE-Y | CB1055 | |

Recommendations

ChemWhat

APS-5 Chemiluminescence Substrate (HHCS-1)

High sensitivity: with detection of ALP as low as 1×10^{-19} mol/L (0.01 pg);
Fast peak intensity: reaching sustained peak intensity within several seconds when using ALP;
Wide detection range: with the linear range of detection of ALP between 50-50,000 pg/mL;
Wide linearity: linear range of detection extending over seven orders of magnitude;
Temperature insensitivity: reaction stable between 22-35°C, no need for precise temperature control.

| | |
|----------------------|--|
| Appearance | Light yellow powder |
| Order # | CB1063 |
| Package | Brown glass bottle |
| Reaction Temperature | 22-35°C |
| Storage | -20°C, away from light |
| Stability | Stable at -20°C for 2 years |
| Application(s) | Suitable for CLIA with ALP as the marker |

ChemWhat

APS-5 Chemiluminescence Solution (HHCS-4)

High sensitivity: with detection of ALP as low as 1×10^{-19} mol/L (0.01 pg);
Fast peak intensity: reaching sustained peak intensity within several seconds when using ALP;
Wide detection range: with the linear range of detection of ALP between 50-50,000 pg/mL;
Wide linearity: linear range of detection extending over seven orders of magnitude;
Temperature insensitivity: reaction stable between 22-35°C, no need for precise temperature control.

| | |
|----------------------|--|
| Appearance | Pale yellow, clear liquid |
| Order # | CB4063 |
| Package | Brown plastic bottle |
| Reaction Temperature | 22-35°C |
| Storage | 2-8°C, away from light |
| Stability | Stable at 2-8°C for 1 year |
| Application(s) | Suitable for CLIA with ALP as the marker |

Recommendations

ChemWhat

AMPPD Chemiluminescence Substrate

High sensitivity: with detection of ALP as low as 1×10^{-19} mol/L (0.01 pg);

Wide detection range: with the linear range of detection of ALP between 50-50,000 pg/mL;

Stable for up to 2 years if properly kept away from light at 2-8°C.

| | |
|----------------------|---|
| Appearance | White powder |
| Order # | CB2067 |
| Package | Glass or plastic bottle |
| Reaction Temperature | 22-35°C |
| Storage | 2-8°C, tightly sealed and stored in a cool, dry environment away from light |
| Stability | Stable for 2 years if kept away from light at -20°C |
| Application(s) | Suitable for CLIA with ALP as the marker |

10

ChemWhat

AMPPD Chemiluminescence Solution

High sensitivity: with detection of ALP as low as 1×10^{-19} mol/L (0.01 pg);

Wide detection range: with the linear range of detection of ALP between 50-50,000 pg/mL;

Stable for up to 2 years if properly kept away from light at 2-8°C.

| | |
|----------------------|---|
| Appearance | Yellowish-green liquid |
| Order # | CB1067 |
| Package | Brown plastic bottle |
| Reaction Temperature | 22-35°C |
| Storage | 2-8°C, away from light |
| Stability | Stable for 2 years if kept away from light at -20°C |
| Application(s) | Suitable for CLIA with ALP as the marker |

| Product | Abbreviation | Order # | Application(s) |
|---------------------------|--------------|---------|-------------------|
| S2238, Thrombin Substrate | S2238 | CB1025 | Coagulation tests |
| S2222, Thrombin Substrate | S2222 | CB2025 | |
| S2366, Thrombin Substrate | S2366 | CB3025 | |
| S2302, Thrombin Substrate | S2302 | CB4025 | |
| S2403, Thrombin Substrate | S2403 | CB5025 | |
| S2444, Thrombin Substrate | S2444 | CB6025 | |
| S2765, Thrombin Substrate | S2765 | CB7025 | |
| S2732, Thrombin Substrate | S2732 | CB8025 | |
| Coagulation Factor IXa | Factor IXa | CB9025 | |
| Thrombin | Thrombin | CB0125 | |
| Batroxobin | Batroxobin | CB1125 | |
| Coagulation Factor XIII | Factor XIII | CB2125 | |

11

Recommendations

Thrombin Substrate (S-2238)

Features high purity and solubility;
 Minimizes batch-to-batch variation with stabler manufacturing techniques;
 Supports preparation of stable reagents.

| | |
|--------------------------|--|
| Appearance | White powder |
| CAS No | 115388-96-0 |
| Molecular Formula/Weight | C ₂₇ H ₃₈ Cl ₂ N ₈ O ₅ / 624.23 |
| Amount | ≥99% |
| Solubility | >10 mg/mL in pure water |
| Storage | 2-8°C, tightly sealed and stored in a cool, dry environment without sun exposure; kept at -20°C away from light for long-term storage |
| Long-term Stability | Stable for 2 years if kept away from light at -20°C |
| Application Examples | <p>To determine thrombin concentrations in blood samples</p> <p>To screen for antithrombin deficiency by measuring antithrombin concentrations in blood samples</p> <p>To implement intraoperative monitoring of heparin</p> <p>To evaluate specific anti-FXa or anti-FIIa activities of unfractionated and low-molecular weight heparins</p> <p>To accurately evaluate anti-FIIa activity of unfractionated and low-molecular-weight heparins</p> <p>To evaluate anti-FIIa activity of chemically-synthesized substances or tissue extracts</p> |

| Product | Abbreviation | Order # | Application(s) |
|--------------------------------------|--------------|----------|--------------------------------|
| Hepatic Function Markers | | | |
| Alanine Transaminase | ALT | CWRS1010 | Alanine assay (as substrate) |
| Aspartate Aminotransferase | AST | CWRS1020 | Aspartate assay (as substrate) |
| α -L-fucosidase | AFU | CWRS1092 | CNPF hydrolysis (as substrate) |
| 5'-Nucleotidase | 5'-NT | CWRS1061 | Peroxide assay |
| Total Bile Acid | TBA | CWRS1030 | Enzymatic recycling method |
| Adenosine Deaminase | ADA | CWRS1081 | Peroxide assay |
| Glycolic Acid | CG | CWRS1052 | Homogeneous EIA |
| Albumin | ALB | CWRS1011 | Bromocresol green (BCG) |
| | | CWRS1021 | Bromocresol purple (BCP) |
| Type IV Collagen | IVC | CWRS1097 | Latex-enhanced ITM |
| Blood Ammonia | AMM | CWRS1076 | GLDH assay |
| Renal Function Markers | | | |
| Creatinine (Anti-calcium dobesilate) | Crea-S | CWRS2070 | Sarcosine oxidase method |
| β 2-microglobulin | β 2-MG | CWRS1033 | Latex-enhanced ITM |
| Microalbumin | MALB | CWRS1002 | ITM |
| Cystatin C | Cys-C | CWRS1044 | Latex-enhanced ITM |
| Glycemic Markers | | | |
| Hemoglobin A1c | HbA1c | CWRS1090 | FPOX method |

| Product | Abbreviation | Order # | Application(s) |
|--|--------------|----------|--|
| Glycemic Markers | | | |
| Glycated Albumin (Provided with ALB for BCG albumin assay) | GA | CWRS1001 | Ketoamine oxidase assay |
| Glycated Albumin (Provided with ALB for BCP albumin assay) | | CWRS2001 | |
| Glycated Albumin (Large sample size) | | CWRS3001 | |
| Glycated Albumin | | CWRS4001 | |
| β -Hydroxybutyrate | β -HB | CWRS1051 | β -HBDH assay |
| 1,5-Anhydro-D-glucitol | 1,5-AG | CWRS1041 | PROD assay |
| Cardiac Markers | | | |
| Creatine Kinase | CK | CWRS1006 | Enzymatic assays |
| Creatine Kinase-MB Isoenzyme | CKMB | CWRS1066 | Latex-enhanced ITM |
| | | CWRS1080 | Immunosuppressive method (IM) |
| Myoglobin | MYO | CWRS1074 | Latex-enhanced ITM |
| Troponin I | cTnI | CWRS1096 | Latex-enhanced ITM |
| Heart-type Fatty Acid Binding Protein | H-FABP | CWRS1023 | Latex-enhanced ITM |
| Myeloperoxidase | MPO | CWRS1007 | Latex-enhanced ITM |
| Lipoprotein-associated Phospholipase A2 | Lp-PLA2 | CWRS1042 | Enzymatic & latex-enhanced ITM |
| Blood Lipid Markers | | | |
| High-density Lipoprotein-cholesterol | HDL-C | CWRS1050 | Direct method (surfactant clearance) |
| Low-density Lipoprotein-cholesterol | LDL-C | CWRS1060 | Direct method (surfactant clearance) |
| Free Fatty Acids | NEFA | CWRS1071 | Enzymatic colorimetric method (ACS-ACOD) |
| Apolipoprotein A1 | Apo A1 | CWRS1043 | ITM |

| Item | Abbreviation | Order # | Methodology |
|---|-----------------|----------|-------------------------------------|
| Blood Lipid Markers | | | |
| Apolipoprotein A2 | Apo A2 | CWRS1024 | ITM |
| Apolipoprotein B | Apo B | CWRS1053 | ITM |
| Apolipoprotein E | Apo E | CWRS1063 | ITM |
| Apolipoprotein (α) | LP (α) | CWRS1014 | Latex-enhanced ITM |
| Homocysteine | HCY | CWRS1091 | Cystathionine assay |
| Small Dense Low-density Lipoprotein-cholesterol | sdLDL-c | CWRS1032 | Peroxide assay |
| Pancreatic Function Markers | | | |
| α -Amylase | AMY | CWRS1022 | Enzyme kinetics |
| Lipase | LPS | CWRS1058 | Resorufin methyl ether as substrate |
| Rheumatoid Arthritis (RA) Markers | | | |
| Anti-streptolysin O | ASO | CWRS1017 | Latex-enhanced ITM |
| Rheumatoid Factors | RF | CWRS1046 | Latex-enhanced ITM |
| Citrulline-containing Peptide Antibody | CCP | CWRS1028 | Latex-enhanced ITM |
| Tumor Markers | | | |
| Tumor-specific Growth Factor | TSGF | CWRS1008 | Colorimetric method |
| Sialic Acid | SA | CWRS1082 | Sialic acid (NANA) assay |
| Pepsinogen I | PG I | CWRS1038 | Latex-enhanced ITM |
| Pepsinogen II | PG II | CWRS1048 | Latex-enhanced ITM |
| Inflammatory Markers | | | |
| Procalcitonin | PCT | CWRS1083 | Latex-enhanced ITM |

| Item | Abbreviation | Order # | Methodology |
|-------------------------------------|----------------|----------|--------------------|
| Inflammatory Markers | | | |
| Whole-range C-reactive Protein | CRP | CWRS1084 | Latex-enhanced ITM |
| Serum Amyloid A | SAA | CWRS1093 | Latex-enhanced ITM |
| α 1-acidglycoprotein | α 1-AGP | CWRS1055 | ITM |
| High-sensitivity C-reactive Protein | HS-CRP | CWRS1073 | Latex-enhanced ITM |
| Specific Proteins | | | |
| Complement C1q | C1q | CWRS1057 | ITM |
| λ -Light Chain | λ -LC | CWRS1037 | ITM |
| κ -Light Chain | κ -LC | CWRS1047 | ITM |
| Ferritin | Fer | CWRS1027 | Latex-enhanced ITM |
| Transferrin | TRF | CWRS1094 | ITM |
| Fibronectin | Fn | CWRS1067 | ITM |
| Coagulation Markers | | | |
| D-dimer | DD | CWRS1056 | Latex-enhanced ITM |
| Fibrinogen | FDP | CWRS1065 | ITM |
| Others | | | |
| Glucose-6-phosphate Dehydrogenase | G6PD | CWRS1072 | G6P as substrate |
| Unsaturated Iron-binding Capacity | UIBC | CWRS1077 | Ferene method |
| Total Iron-binding Capacity | TIBC | CWRS1087 | Ferene method |
| 25-Hydroxy Vitamin D | 25-OHVD | CWRS1018 | Latex-enhanced ITM |

Recommendations

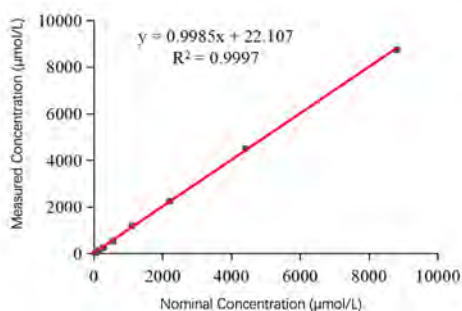
ChemWhat

Crea-S Assay Kit (Sarcosine oxidase assay)

Benefits

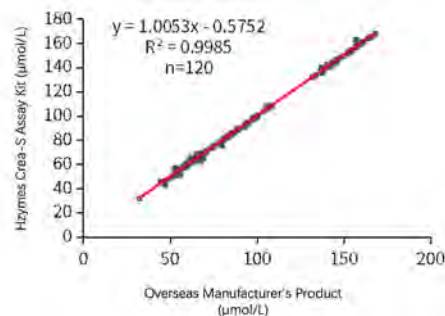
Highly cost-effective with self-supplied core raw materials;
Supports custom solutions for reagent development;
Features a modified molecular structure with excellent anti-interference properties and the minimum detectable concentration of calcium dobesilate of 100 mg/L ($\pm 10\%$);
Maintains superior stability, stable for 18 months if tightly sealed and stored at $<4^{\circ}\text{C}$ and for 28 days after opening.

16



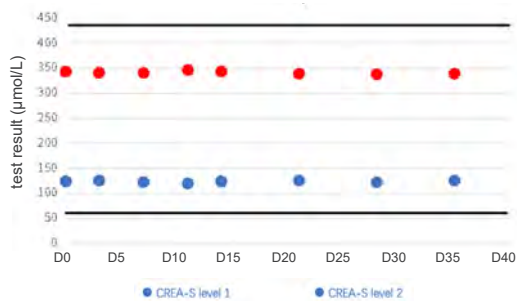
Linear Range of Detection:

The Assay Kit shows a good linearity for Crea-S concentration between 10 μmol/L and 8500 μmol/L.

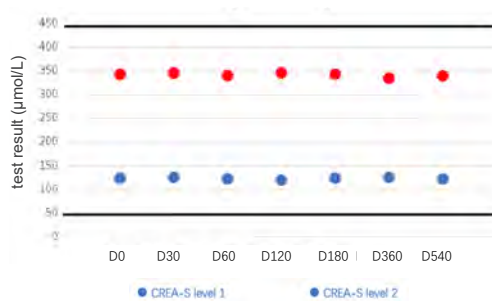


Comparison of Test Results (ChemWhat vs. Another Leading Brand):

ChemWhat Crea-S Assay Kit shows a high degree of accuracy in the tests of 120 samples compared with another leading brand Creatine Assay Kit.



In-use Stability



Long-term Stability

Anti-interference Performance

Vitamin C ≤ 50 mg/dL

Bilirubin ≤ 16 mg/dL

Lipemia ≤ 1500 mg/dL

Hemoglobin ≤ 200 mg/dL

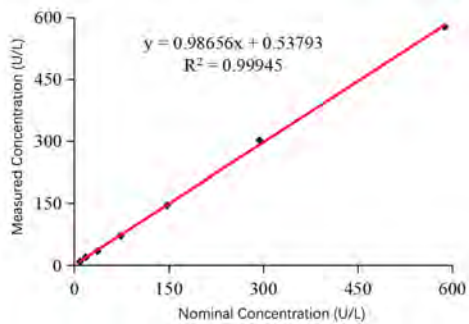
Recommendations

ChemWhat

Crea-S Kinase-MB Isoenzyme (CK-MB) Assay Kit (Immunosuppressive method)

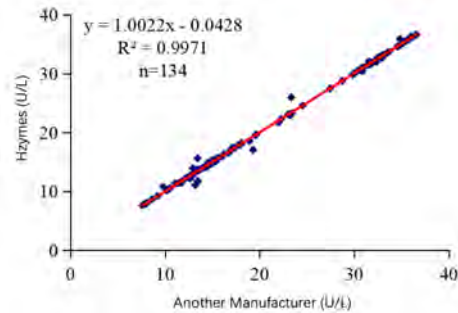
Benefits

Supports raw material selection with high standards to guarantee product quality and reduce negative values in clinical test results;
Maintains superior stability, stable for 18 months if tightly sealed and stored at $<4^{\circ}\text{C}$ and for 28 days after opening;
Displays high intra- and inter-assay precision, with the intra-assay CV $\leq 5\%$ and the inter-assay CV $\leq 4\%$.



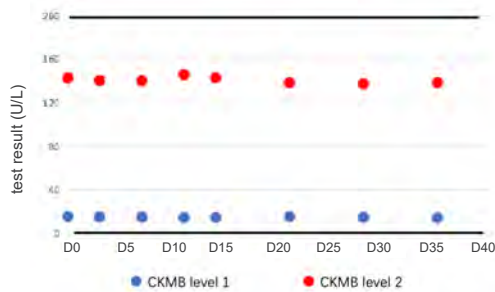
Linear Range of Detection:

The Assay Kit shows a good linearity for CK-MB concentration between 4 U/L and 600 U/L.

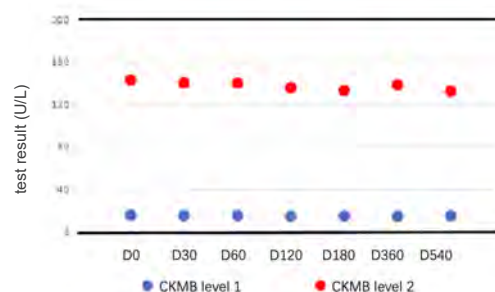


Comparison of Test Results (ChemWhat vs. Another Leading Brand):

The test results of ChemWhat's and another brand's reagents are strongly correlated in the tests of 134 samples.



In-use Stability



Long-term Stability

Anti-interference Performance

Vitamin C ≤ 30 mg/dL

Glucose ≤ 1000 mg/dL

Bilirubin ≤ 50 mg/dL

Lipemia ≤ 2000 mg/dL

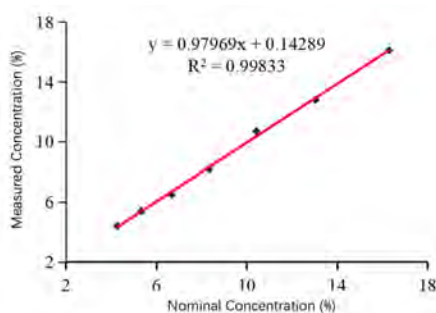
Recommendations

ChemWhat

Hemoglobin A1c (HbA1c) Assay Kit (Fructosyl-peptide oxidase assay)

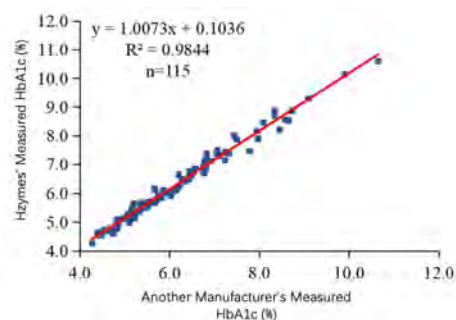
Benefits

Supports IFCC traceable enzymatic assays;
Features superior specificity and accuracy, without interference from subtypes of hemoglobin A (HbA);
Maintains superior stability, stable for 18 months if tightly sealed and stored at $<4^{\circ}\text{C}$ and for 28 days after opening;
Displays high intra- and inter-assay precision, with the intra-assay CV $\leq 4\%$ and the inter-assay CV $\leq 6\%$.



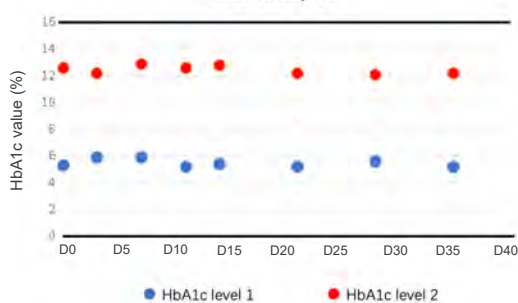
Linear Range of Detection:

The Assay Kit shows a good linearity for HbA1c concentration between 3% and 16%.

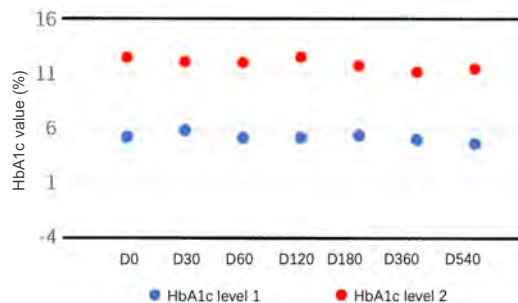


Comparison of Reagent Test Results:

The test results of ChemWhat and another brand's reagents are strongly correlated in the tests of 115 samples.



In-use Stability



Long-term Stability

Anti-interference Performance

Vitamin C ≤ 30 mg/dL
Bilirubin ≤ 50 mg/dL

Glucose ≤ 1000 mg/dL
Lipemia ≤ 2000 mg/dL

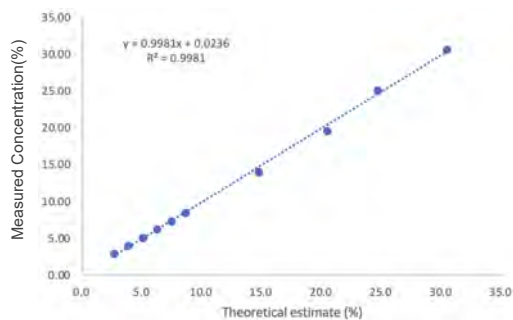
Recommendations

ChemWhat

Glycated Albumin (GA) Assay Kit (Ketoamine oxidase assay)

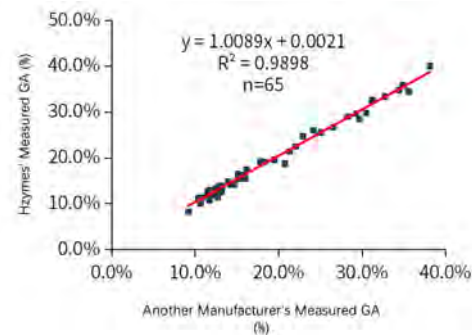
Benefits

Supports custom reagent production according to customers' registration information;
Maintains superior stability, stable for a year if tightly sealed and stored at $<4^{\circ}\text{C}$ and for over 28 days after opening if properly kept in a biochemical analyzer;
Features high-specificity, high-sensitivity, and excellent anti-interference properties;
Displays high intra- and inter-assay precision, with the intra-assay CV $\leq 4\%$ and the inter-assay CV $\leq 10\%$.



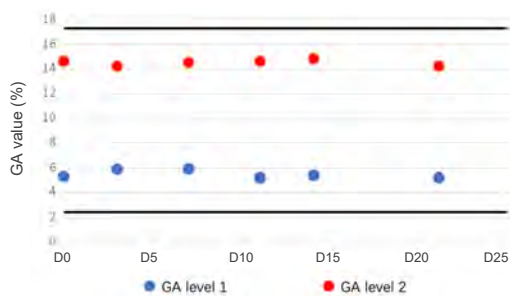
Linear Range of Detection:

The assay kit shows a good linearity for GA concentration between 2.9%-30.0%

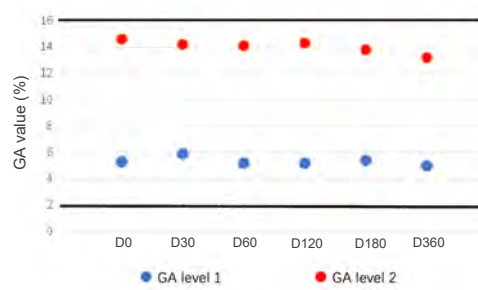


Comparison of Reagent Test Results:

The test results of ChemWhat's and another brand's reagents are strongly correlated in the tests of 65 samples.



In-use Stability



Long-term Stability

Anti-interference Performance

Vitamin C ≤ 100 mg/dL

Glucose ≤ 1000 mg/dL

Bilirubin ≤ 14.6 mg/dL

Lipemia ≤ 1500 mg/dL

Hemoglobin ≤ 196 mg/dL

Recommendations

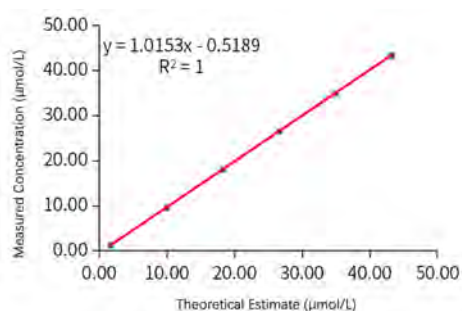
ChemWhat

Homocysteine (HCY) Assay Kit (Cystathionine assay)

Benefits

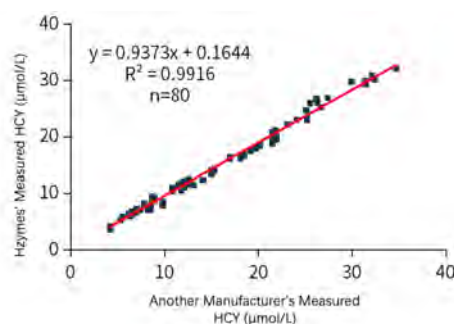
Completely made of self-supplied raw materials;
Features high-specificity, high-sensitivity, and excellent anti-interference properties;
Maintains superior stability, stable for 18 months if tightly sealed and stored at $<4^{\circ}\text{C}$ and for 30 days after opening;
Displays high intra- and inter-assay precision, with the intra-assay CV $\leq 3\%$ and the inter-assay CV $\leq 5\%$.

20



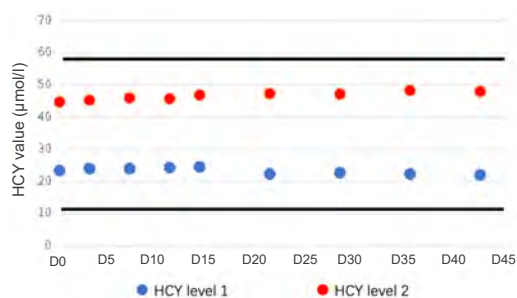
Linear Range of Detection:

The Assay Kit shows a good linearity for HCY concentration between $0 \mu\text{mol/L}$ and $50 \mu\text{mol/L}$.

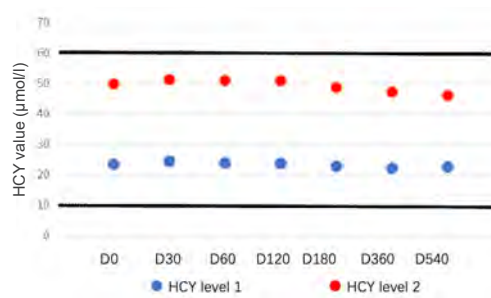


Comparison of Reagent Test Results:

The test results of ChemWhat's and another brand's reagents are strongly correlated in the tests of 80 samples.



In-use Stability



Long-term Stability

Anti-interference Performance

Hemoglobin $\leq 500 \text{ mg/dL}$

Triglyceride $\leq 1250 \text{ mg/dL}$

Vitamin C $\leq 20 \text{ mg/dL}$

Bilirubin $\leq 50 \text{ mg/dL}$

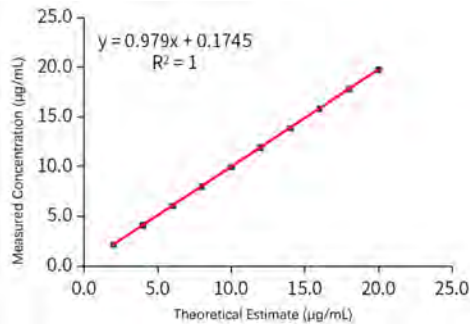
Recommendations

ChemWhat

D-dimer (DD) Assay Kit (Latex-enhanced ITM)

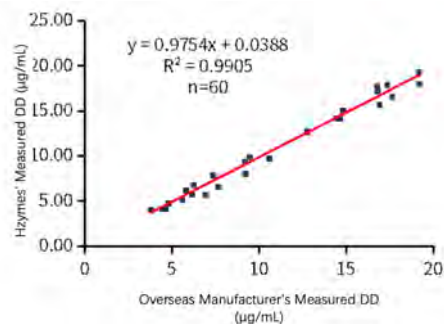
Benefits

Features high-specificity and excellent anti-interference properties;
Maintains superior stability, stable for 18 months if tightly sealed and stored at 4°C and for 28 days after opening;
Displays high intra- and inter-assay precision, with the intra-assay CV $\leq 5\%$ and the inter-assay CV $\leq 10\%$.



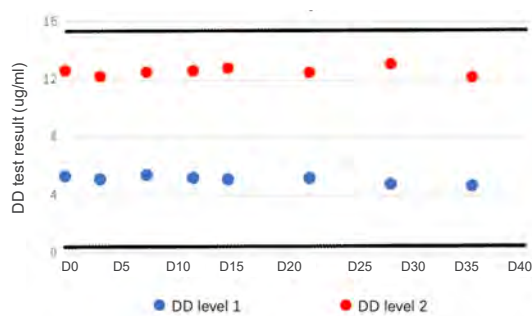
Linear Range of Detection:

The Assay Kit shows a good linearity for DD concentration between 0.5 µg/mL and 20 µg/mL.

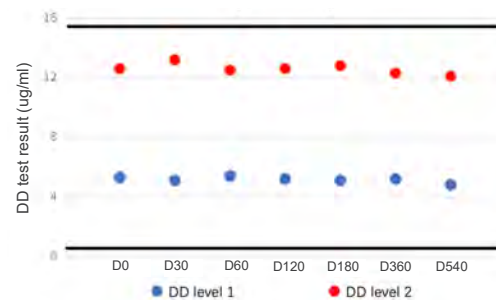


Comparison of Reagent Test Results:

The test results of ChemWhat's and another brand's reagents are strongly correlated in the tests of 60 samples.



In-use Stability



Long-term Stability

Anti-interference Performance

Vitamin C ≤ 30 mg/dL

Hemoglobin ≤ 1000 mg/dL

Bilirubin ≤ 50 mg/dL

Lipemia ≤ 2000 mg/dL

Rheumatoid Factors ≤ 500 IU/mL

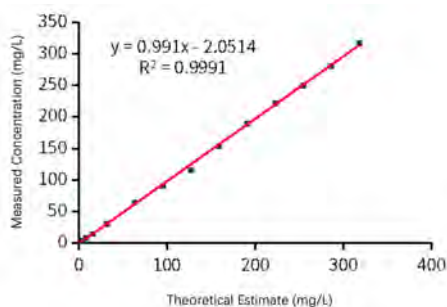
Key Recommendations

ChemWhat

Serum Amyloid A (SAA) Assay Kit (Latex-enhanced ITM)

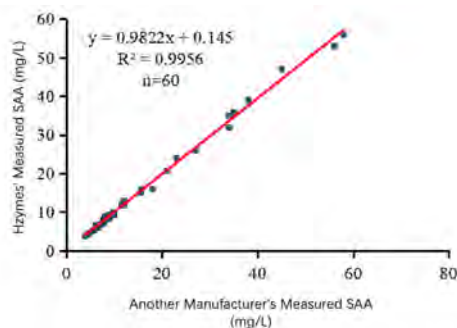
Benefits

Highly accurate, with $R^2 > 0.99$ and the mean variation within $\pm 1.0\%$;
Features high-specificity, high-sensitivity, and excellent anti-interference properties;
Maintains superior stability, stable for 18 months if tightly sealed and stored at $< 4^\circ\text{C}$ and for 28 days after opening;
Displays high intra- and inter-assay precision, with the intra-assay CV $\leq 3\%$ and the inter-assay CV $\leq 6\%$.



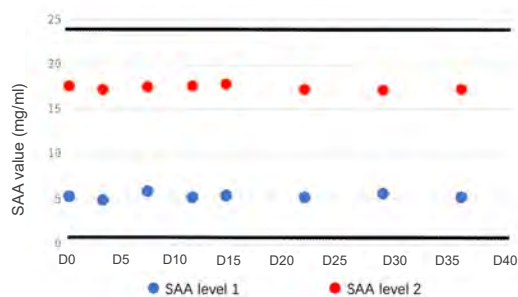
Linear Range of Detection:

The Assay Kit shows a good linearity for SAA concentration between 5 mg/L and 400 mg/L.

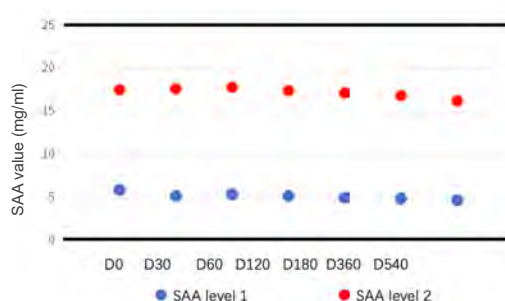


Comparison of Reagent Test Results:

ChemWhat SAA Assay Kit shows a high degree of accuracy compared with another leading brand's SAA Assay Kit.



In-use Stability



Long-term Stability

Anti-interference Performance

Bilirubin ≤ 50 mg/dL

Lipemia ≤ 500 mg/dL

Hemoglobin ≤ 750 mg/dL

Rheumatoid Factors ≤ 500 IU/mL

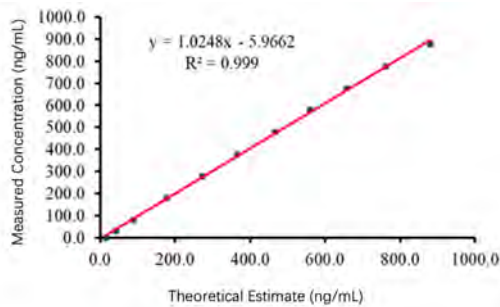
Key Recommendations

ChemWhat

Myoglobin (MYO) Assay Kit (Latex-enhanced ITM)

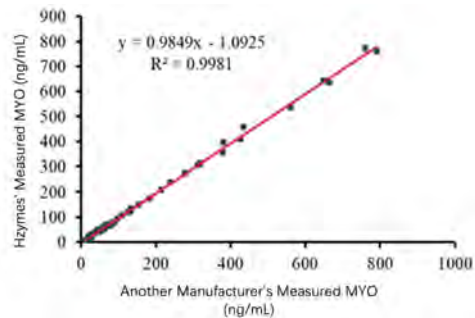
Benefits

Highly accurate, with $R^2 > 0.99$ and the mean variation within $\pm 1.0\%$;
Features high-specificity, high-sensitivity, and excellent anti-interference properties;
Maintains superior stability, stable for 18 months if tightly sealed and stored at $< 4^\circ\text{C}$ and for 28 days after opening;
Displays high intra- and inter-assay precision, with the intra-assay CV $\leq 3\%$ and the inter-assay CV $\leq 5\%$.



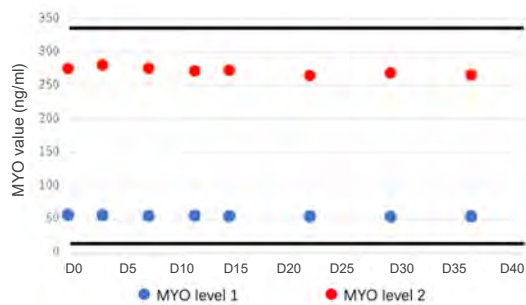
Linear Range of Detection:

The Assay Kit shows a good linearity for MYO concentration between 15 ng/mL and 800 ng/mL.

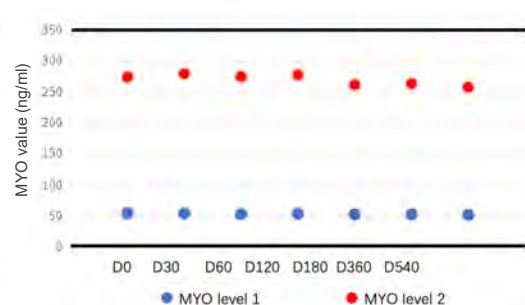


Comparison of Reagent Test Results:

ChemWhat MYO Assay Kit shows a high degree of accuracy compared with another leading brand's MYO Assay Kit.



In-use Stability



Long-term Stability

Anti-interference Performance

Bilirubin ≤ 30 mg/dL

Hemoglobin ≤ 100 mg/dL

Lipemia ≤ 250 mg/dL

Rheumatoid Factors ≤ 500 IU/mL

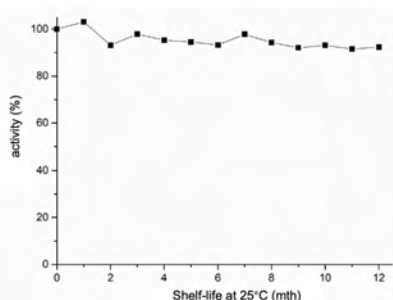
| | Product | Order # |
|----------------------------------|--|---------|
| Pre-processing | Proteinase K | CB4054 |
| | Proteinase K NGS | CB7054 |
| | Proteinase K (Liquid) | CB6054 |
| | Magnetic beads for DNA Extraction (Carboxyl) | CMD1043 |
| | Magnetic Nanoparticles for DNA Extraction (Low protein binding affinity, Hydroxyl) | CMD3043 |
| | DNA/RNA extraction kit (Performance) | CMD1053 |
| | DNA/RNA extraction kit (Lite) | CMD2053 |
| | DNA/RNA extraction kit (Fast) | CMD3053 |
| PCR | Taq DNA Polymerase | CMD1010 |
| | Hot-Start Taq DNA Polymerase (Chemically modified) | CMD1020 |
| | Hot-Start Taq DNA Polymerase (Antibody modified) | CMD2020 |
| | Taq DNA Polymerase Super Mix (Chemically modified) | CMD1073 |
| | Taq DNA Polymerase U+ Mix (Chemically modified) | CMD2073 |
| | Taq DNA Polymerase Super Mix (Antibody modified) | CMD1083 |
| | Taq DNA Polymerase U+ Mix (Antibody modified) | CMD2083 |
| | One-Step RT-qPCR Kit | CMD1004 |
| | Uracil-DNA Glycosylase (UDG) | CMD1023 |
| | Recombinant RNase Inhibitor | CMD1093 |
| | M-MLV RTase(RNase H-) | CMD1033 |
| LAMP | Bst DNA Polymerase (Large Fragment) | CB1007 |
| | Bst DNA Polymerase (Large Fragment) | CB2007 |
| | Bst DNA Polymerase 3.0 | CB3007 |
| | EasyVis Loop-mediated Amplification Kit | CMD2025 |
| | FluoS Loop-mediated amplification kit | CMD3025 |
| | RTL RTase | CMD1035 |
| All-Purpose Raw Material | dNTP (25 mM each) | CMD1012 |
| | dNTP (10 mM each) | CMD2012 |
| | dUTP (100 mM) | CMD1062 |
| | dTTP (100 mM) | CMD1072 |
| | dCTP (100 mM) | CMD1082 |
| | dGTP (100 mM) | CMD1092 |
| | dATP (100 mM) | CMD1003 |
| NGS | T4 DNA Ligase | CMD1024 |
| | Tn5 Transposase | CMD1034 |
| | T4 DNA Polymerase (End repair) | CMD1044 |
| | T4 Polynucleotide Kinase (PNK) | CMD1054 |
| | Klenow Fragment | CMD1064 |
| | ChemWhat Hifi DNA Polymerase | CMD1074 |
| | dsDNA Fragmentase | CMD1045 |
| | Transposase Library Prep Kit (Illumina) | CMD1084 |
| | WGS Library Prep Kit (Illumina) | CMD1094 |
| mRNA Library Prep Kit (Illumina) | CMD1005 | |

High-End Proteinase K Active Proteinase K of Enhanced Stability

Benefits

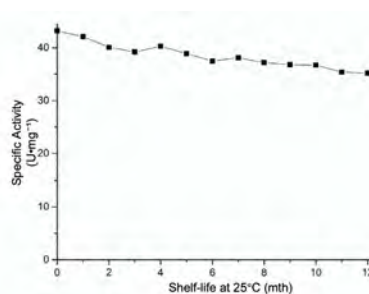
- 1 Higher stability and enzyme activity based on directed evolution technologies
- 2 Tolerant of Guanidine salt
- 3 Free of RNase DNase Nickase and heavy metal ions, DNA <5 pg/mg
- 4 Annual output of 1500 kg, the largest proteinase K supplier in China

Test Data



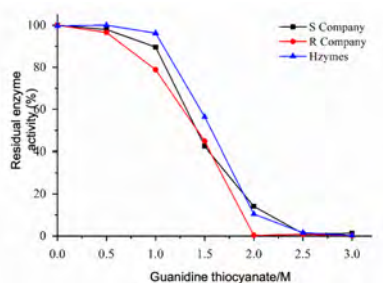
Stability of Proteinase K (Liquid)

Stable for at least a year at room temperature

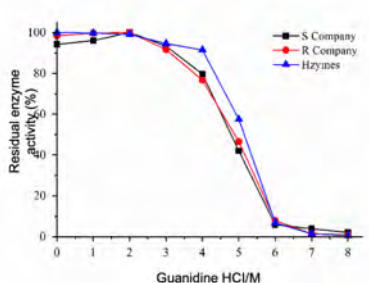


Stability of Proteinase K (Powder)

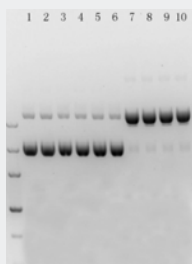
Stable for at least a year at room temperature



Guanidine thiocyanate tolerance

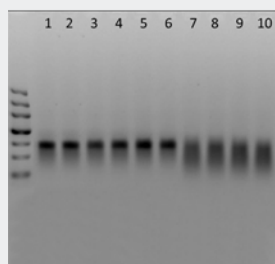


Guanidine hydrochloride tolerance



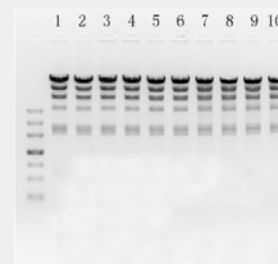
Free of Nickase

1-2: Nickase Free Water;
3-4: Proteinase K Storage Buffer;
5-6: HH Proteinase K;
7-10: Proteinase K From X Company



Free of RNase

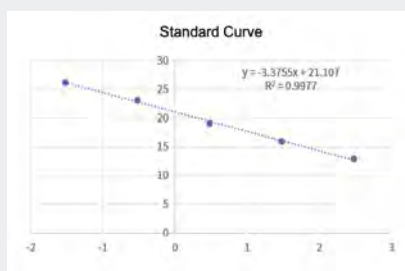
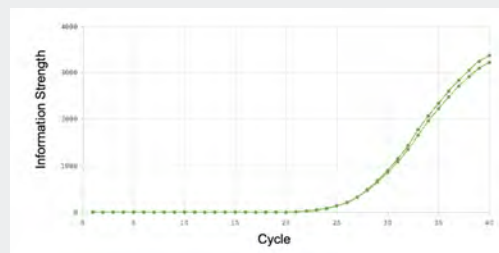
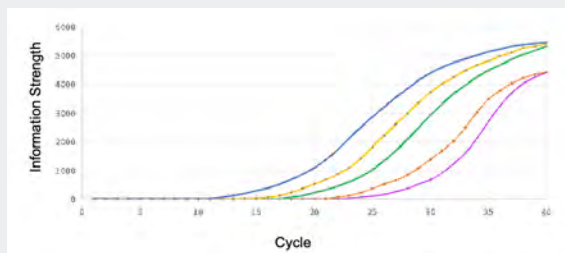
1-2: RNase Free Water;
3-4: Proteinase K Storage Buffer;
5-6: HH Proteinase K;
7-10: Proteinase K From X Company



Free of DNase

1-2: DNase Free Water;
3-4: Proteinase K Storage Buffer;
5-6: HH Proteinase K;
7-10: Proteinase K From X Company

Test Data



| Sample | m-CT | Recovered DNA (pg/mg) | Recovery (%) | Total DNA (pg/mg) |
|-----------------------|--------------|-----------------------|--------------|-------------------|
| PRK | 24.66 | 2.23 | 83% | 2.687 |
| Spiked standard PRK 2 | 18.723 | 126.728 | -- | -- |
| Standard PRK 1 | 12.955 | -- | -- | -- |
| Standard PRK 2 | 16.000 | | | |
| Standard PRK 3 | 19.125 | | | |
| Standard PRK 4 | 23.135 | | | |
| Standard PRK 5 | 26.265 | | | |
| RNA-FreeH2O | Undetermined | -- | -- | -- |

DNA contamination DNA <5 pg/mg

26

Ordering Information

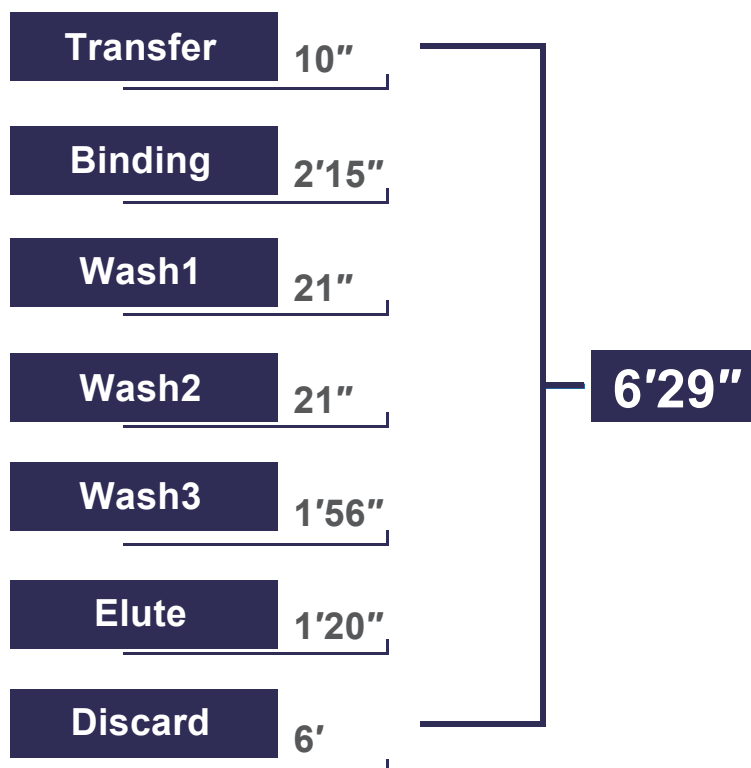
| Order # | Product | Features |
|---------|-----------------------|--|
| CB0054 | Proteinase K | Specific activity ≥ 30 U/mg |
| CB7054 | Proteinase K NGS | Specific activity ≥ 40 U/mg, DNA < 5 pg/mg |
| CB2054 | Proteinase K (Liquid) | Specific activity ≥ 800 U/mL |

6.5 Min Flash Sample Processing DNA/RNA Extraction Solution

Benefits

- 1 Isolate total nucleic acid within 6.5 min, Supporting a flash molecular POCT
- 2 Work efficiently up to 400 µL sample extraction
- 3 High nucleic acid extraction efficiency with a limitation of 10 copies nucleic acid each sample, making downstream detection more sensitive
- 4 Prepackaged are available

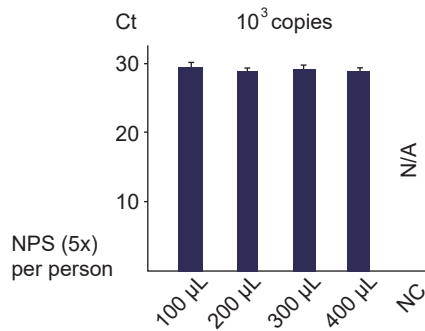
Performance Data



Time for Each Process & Whole-Process DNA Extraction

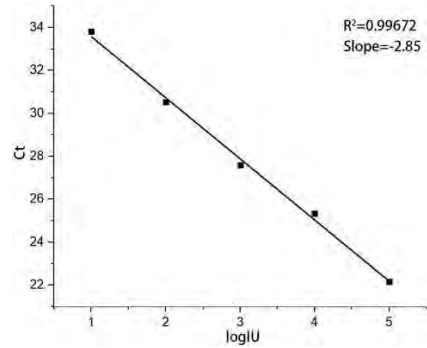
Fastest DNA extraction ever; achieves high-quality DNA extraction within 6.5 min

Test Data



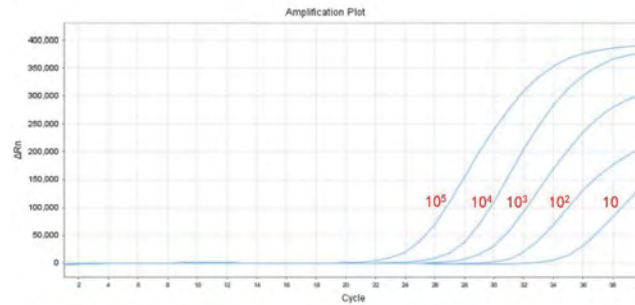
Robust testing

Guarantees stable DNA extraction with the sample size of up to 400 µL



Linear Range of Detection

Ct value shows good linear relationship with Log₁₀U



Amplification Plot of gradient dilution sample

Amplification plot of DNA extraction in samples containing 10-10⁵ copies COVID-19 pseudovirus

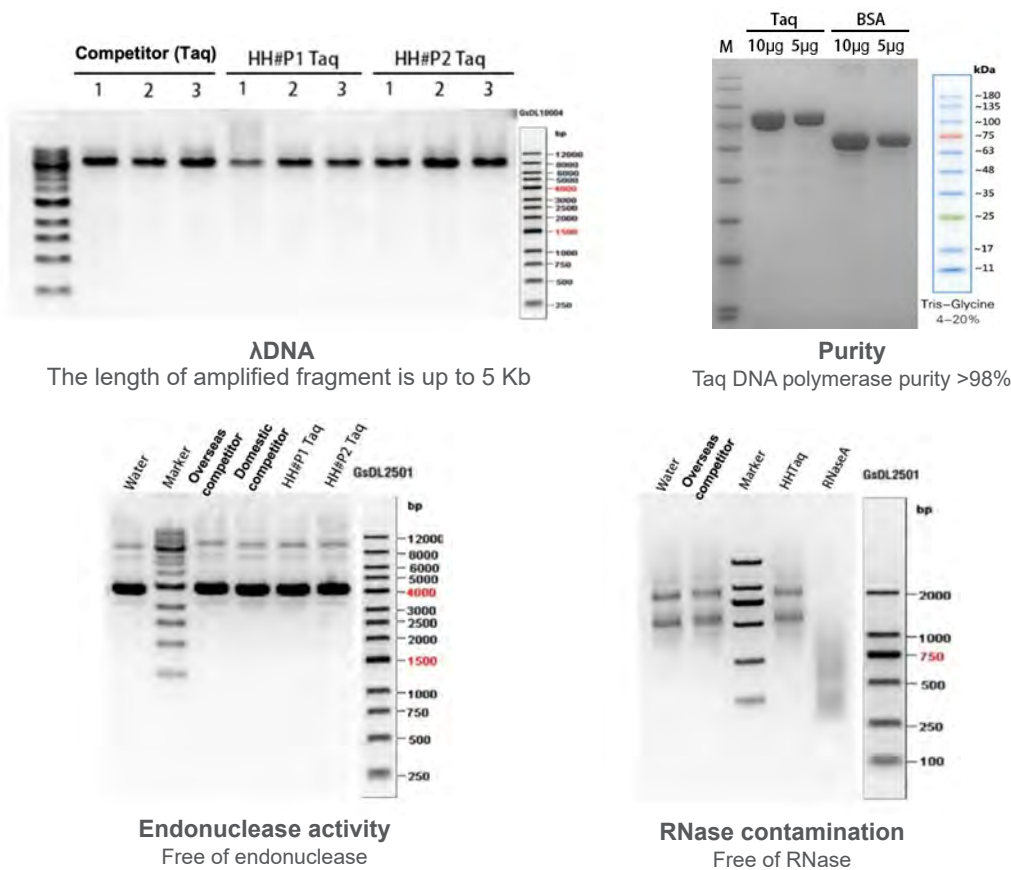
Ordering Information

| Order # | Product | Sample sources | Extraction |
|---------|--|---|------------|
| CMD1053 | DNA Extraction Kit (High-performance) | liquid samples, such as nasopharyngeal swab (NPS), blood, saliva, and urine | 22 min |
| CMD2053 | DNA Extraction Kit (Lite) | liquid samples, such as nasopharyngeal swab (NPS), saliva, and urine | 16 min |
| CMD3053 | DNA Extraction Kit (Fast) | liquid samples, such as nasopharyngeal swab (NPS), saliva, and urine | 6.5 min |
| CMD1043 | Magnetic beads for DNA Extraction (Carboxyl) | Regular samples | |
| CMD3043 | Magnetic Nanoparticles for DNA Extraction (low protein binding affinity, Hydroxyl) | Hybrid protein-containing samples | |

Benefits

- 1 Long-range PCR to amplify products up to 5 kb
- 2 High PCR sensitivity with the minimum detection of 0.1 pg DNA
- 3 Equipped with Class 10000 GMP workshops, a fermentation production line with a maximum productivity of 10 tons/d, and an automatic packaging line

Test Data



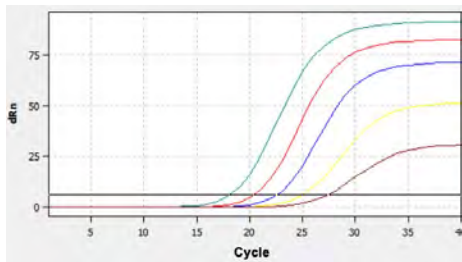
Ordering Information

| Order # | Product | Spec |
|---------|--------------------|-----------------|
| CMD1010 | Taq DNA Polymerase | 100 µL, 1000 µL |

Benefits

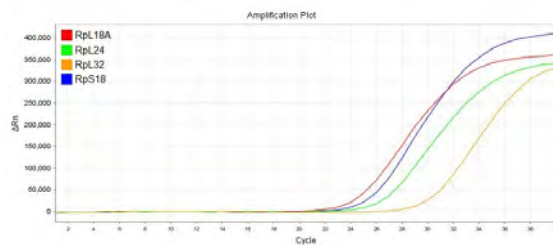
- 1 High sensitivity in the detection of single DNA target (≥ 10 copies) and total RNA (≥ 0.1 pg)
- 2 Applicable for PCR using dUTP/UDG system
- 3 Compatible with multiple PCR
- 4 The kits are designed for RNA detection from a wide range of sample types and inputs (0.08–50 ng/ μ L).
- 5 Highly resistant to the interference of impurities

Test Data



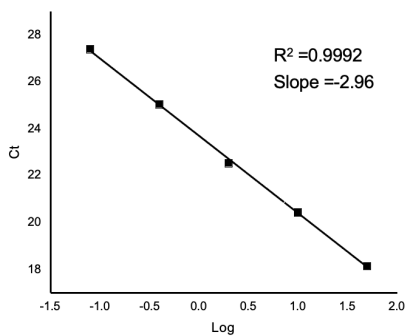
Sensitivity Analysis

Clear amplification plots are obtained from the templates at different concentrations (50, 10, 2, 0.4, and 0.08 ng/ μ L).



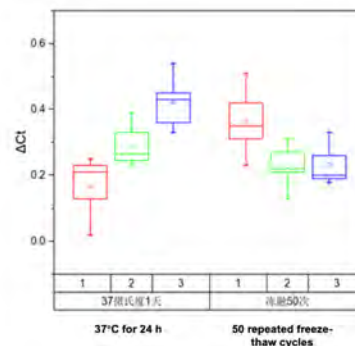
Multiple PCR reaction test

A RT-qPCR template consisting of 0.05 ng of the total RNA from a fruit fly.



Linear Range

Good linearity over a wide concentration range of template.



Stability Analysis

Thermal acceleration and freeze-thaw tests show that the reagent has good stability.

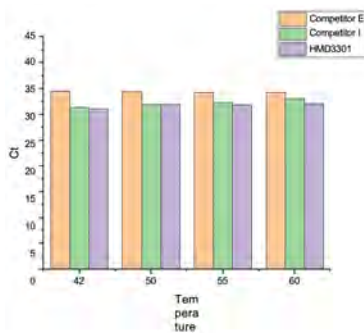
Ordering Information

| Order # | Product | Spec |
|---------|----------------------|-------------|
| CMD1004 | One-Step RT-qPCR Kit | 1 mL, 10 mL |

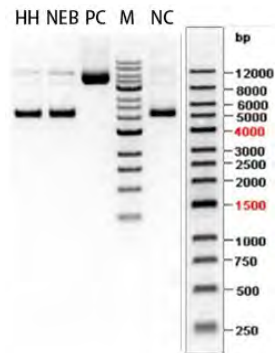
Benefits

- 1 Supports reverse transcription in a wide temperature range (37-60°C)
- 2 Guaranteed high purity, free of nuclease contamination and residual bacterial DNA
- 3 Work efficiently with GC-rich and highly structured RNA templates
- 4 Long-range PCR to amplify RNA up to 10kb
- 5 Also available in a glycerin-free form for freeze-dried qPCR

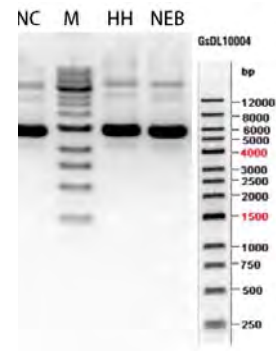
Performance Data



RTase Activity at
Different Temperatures.



Nickase
Free of Nickase



Dnase
Free of DNase

Ordering Information

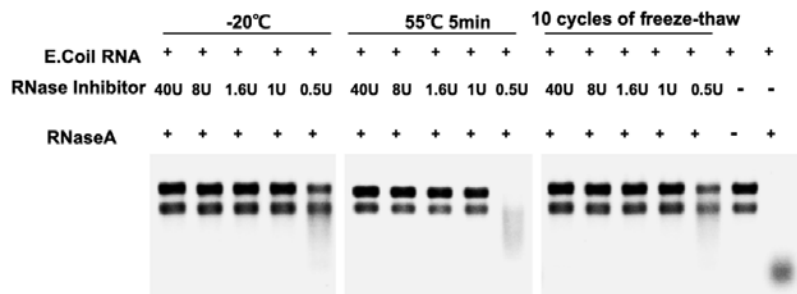
| Order # | Product | Spec |
|---------|-------------|---------------------------|
| CMD1033 | M-MLV RTase | 100 μ L, 1000 μ L |

Reverse Transcription Solution RNase Inhibitor

Benefits

- 1 Inhibits various of RNases
- 2 Free of nuclease contamination and residual bacterial DNA

Performance Data



The RNase Inhibitor activity does not affected after 10 cycles of freeze-thawing,
minor changes in activity after five minutes treatment at 55°C

Ordering Information

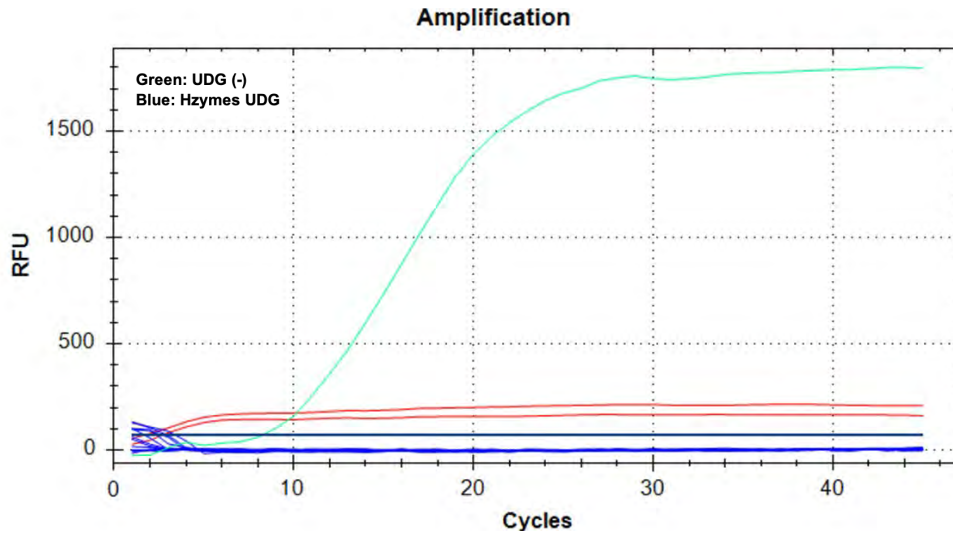
| Order # | Product | Spec |
|---------|-----------------|-----------------------|
| CMD1093 | RNase Inhibitor | 50 µL, 250 µL, 500 µL |

Uracil-DNA Glycosylase (UDG)

Benefits

- 1 Supports efficient uracil removal

Performance Data



Efficiency of Uracil-DNA Glycosylase (UDG)
ChemWhat UDG is efficient in uracil-DNA removal.

33

Ordering Information

| Order # | Product | Spec |
|---------|------------------------------|-------------------|
| CMD1023 | Uracil-DNA Glycosylase (UDG) | 100ul, 500ul, 5ml |

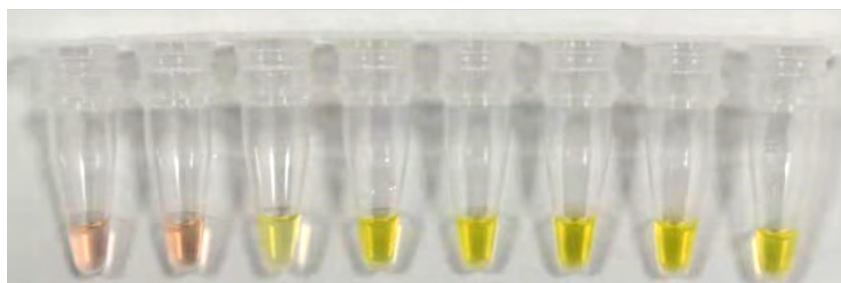
ChemWhat

Bst DNA Polymerase (Large Fragment)

Benefits

- 1 High sensitivity, with the minimum detection of 0.1 pg DNA
- 2 High purity, free of nuclease contamination and residual bacterial DNA, reduced false positive rate

Performance Data



- 1: NC
- 2: 0.01pg
- 3: 0.1pg
- 4: 1pg
- 5: 10pg
- 6: 100µg
- 7: 1µg
- 8: 10µg

1 2 3 4 5 6 7 8

Sensitivity Analysis

The initial template (10 µg of pET-28a(+)) is gradient diluted at 1:10 for amplification by using Bst DNA polymerases, with the reaction mixture turning yellow indicative of positive results. The results suggest that Bst DNA polymerases are sensitive at the minimum detectable concentration of 0.1 pg.

Ordering Information

| Order # | Product | Spec |
|---------|-------------------------------------|-----------------|
| CB1007 | Bst DNA Polymerase (Large Fragment) | 100 µL, 1000 µL |

34

ChemWhat

Bst DNA Polymerase (Large Fragment)

Benefits

- 1 Improved amplification reaction properties compared to Bst DNA Polymerase
- 2 Tolerant for dUTP/UDG system
- 3 Suitable for amplification of GC-rich targets

Ordering Information

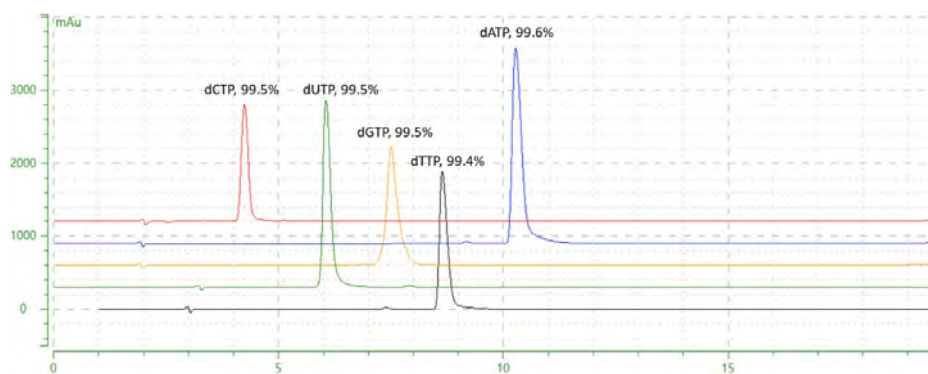
| Order # | Product | Spec |
|---------|-------------------------------------|-----------------|
| CB2007 | Bst DNA Polymerase (Large Fragment) | 100 µL, 1000 µL |

High-purity dNTPs Accelerate Your Molecular Diagnosis

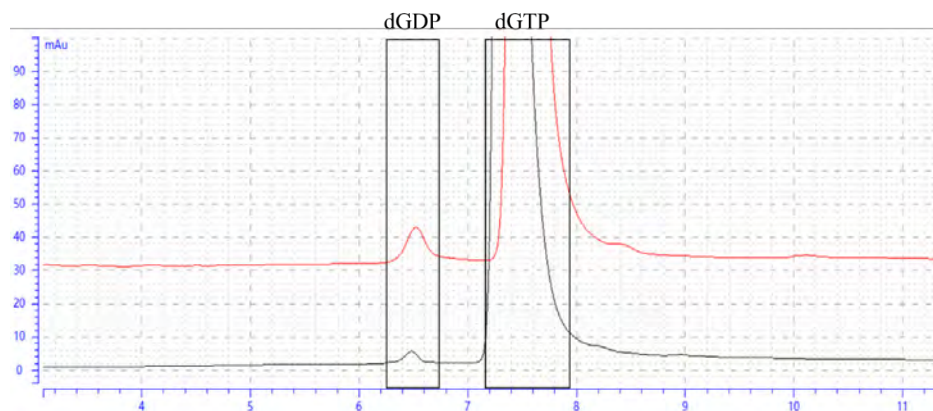
Benefits

- 1 Features dNTP HPLC purity >99.5% , ensure efficient amplification
- 2 Free of DNase, RNase, and heavy metal ions, high sensitivity of detection
- 3 Free of human and bacterial DNA , eliminate background interference

Test Data



dNTPs Purity >99.5%

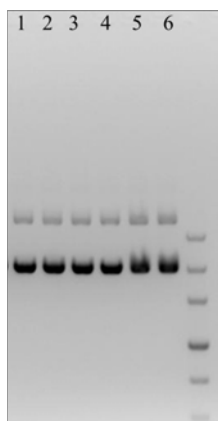


Residual dNDP Detection

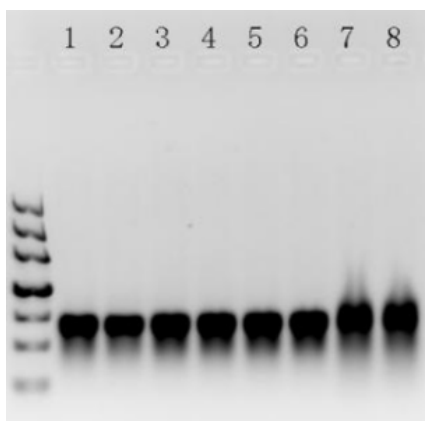
dGDP <0.1%

Black: ChemWhat dGTP; Red: Competitor's dGTP

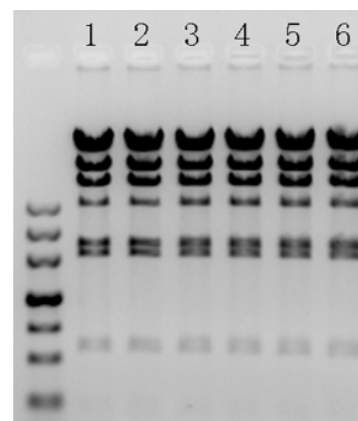
Test Data



Residual Nickase Detection
Free of Nickase
1-2: NC;
3-4: ChemWhat dNTP;
5-6: Competitors' dNTP



Contamination of RNase
Free of RNase
1-2: NC;
3-6: ChemWhat dNTP;
7-8: Competitors' dNTP

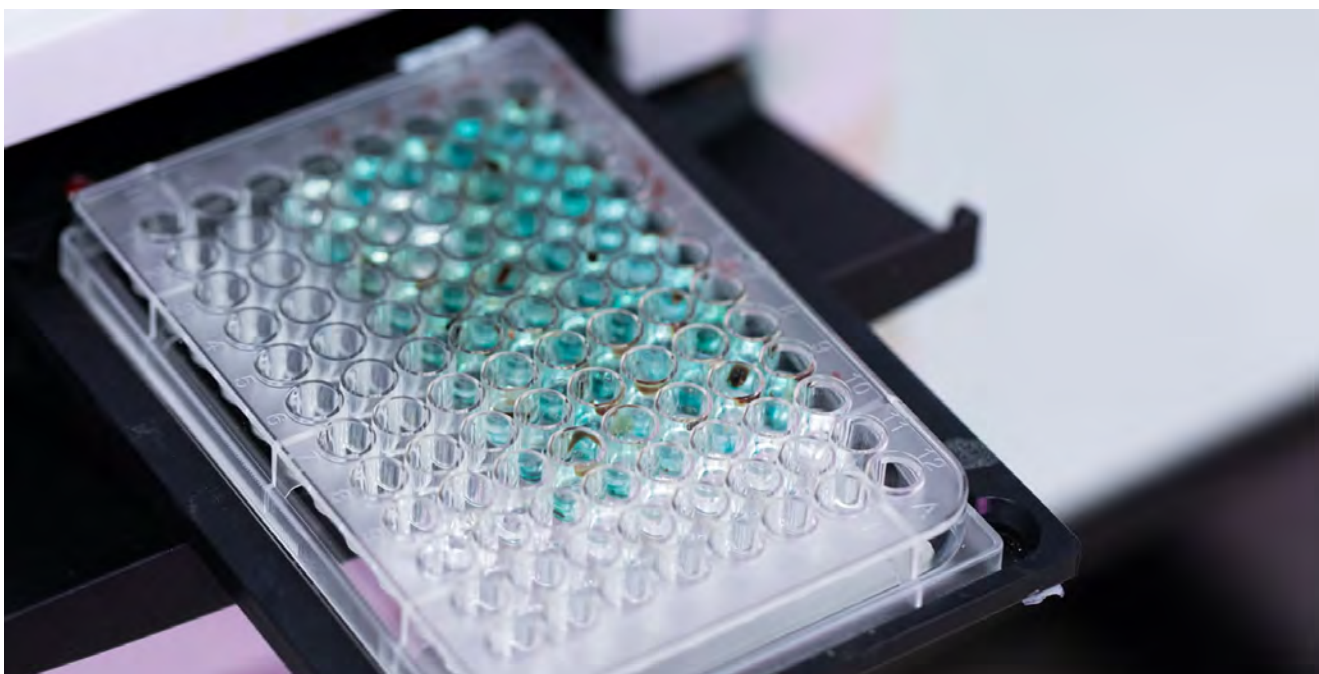


Contamination of DNase
Free of DNase
1-2: NC;
3-6: ChemWhat dNTP

Ordering Information

| Order # | Product | Spec | Abbr |
|---------|---|--------------------|------|
| CMD1012 | Deoxynucleoside triphosphate 25 mM each | 1, 20, 100, 500 mL | dNTP |
| CMD2012 | Deoxynucleoside triphosphate 10 mM each | 1, 20, 100, 500 mL | dNTP |
| CMD1062 | 2'-deoxyuridine-5'-triphosphate trisodium salt 100 mM | 1, 20, 100, 500 mL | dUTP |
| CMD1072 | 2'-deoxythymidine-5'-triphosphate trisodium salt 100 mM | 1, 20, 100, 500 mL | dTTP |
| CMD1082 | 2'-deoxycytidine-5'-triphosphate trisodium salt 100 mM | 1, 20, 100, 500 mL | dCTP |
| CMD1092 | 2'-deoxyguanosine-5'-triphosphate trisodium salt 100 mM | 1, 20, 100, 500 mL | dGTP |
| CMD1003 | 2'-deoxyadenosine-5'-triphosphate trisodium salt 100 mM | 1, 20, 100, 500 mL | dATP |

ChemWhat®



The order number in the catalog is a reference code for ordering biotech products, not the global identifier for ChemWhat products. The ChemWhat global identifier displayed on labels and documents upon shipment may differ slightly.

Website: <https://www.chemwhat.com>

Email: contact@chemwhat.com

If you need any other custom proteins not listed in our catalog, please send us email for inquiries.